



Autism Edmonton Employment Program



DO YOU:

- Identify as neurodiverse or as an individual with a disability?
- Have the skills but struggle to move beyond the first interview?
- Want support to achieve your career goals?
- Want to access to employment, volunteer, and/or mentorship opportunities?

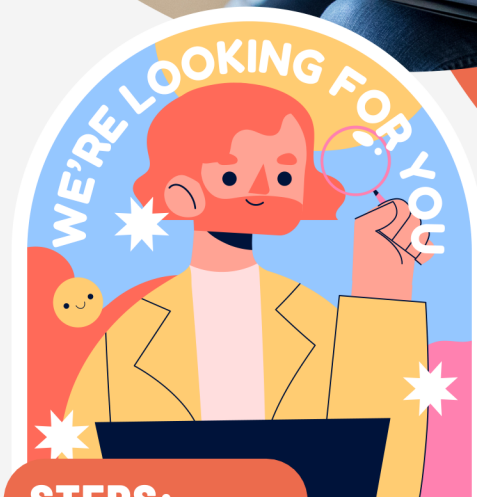
If you think you are a fit for this new program please reach out!

CONTACT US:

 780-453-3971 Ext. 231

 employment@autismedmonton.org

 www.autismedmonton.org



STEPS:

- Interview
- Assessment
- Acceptance into Program
- Training
- Company Search - Match with Employer

INTAKES NOW OPEN